

# SHANTUI

# SE220LC

## Crawler excavator



Modèle du moteur : Cummins B5.9-C  
 Puissance du moteur : 112 kW / 1,950 tr/min  
 Poids en ordre de marche : 22 800 kg  
 Capacité du godet : 1,05 m<sup>3</sup>



### ENGINE

Model	Cummins B5.9-C
Type	Water-cooled, 6-cylinder in-line, turbocharged
Number of cylinders	6
Emission standard	Tier 2
Displacement	5,9L
Rated power	112 kW / 1,950 rpm

### HYDRAULIC SYSTEM

Type	Variable displacement axial piston pump
Rated operating flow	2x218 L/min

### DIGGING FORCE (ISO6015)

Bucket digging force	127 kN
Bucket arm digging force	92.5 kN

### BUCKET

Type	Backhoe
Bucket capacity	0.45-1.2 (1.05) m <sup>3</sup>
Bucket Width	1370 mm

### DRIVING SYSTEM

Type	Axial variable displacement piston motor
Number of carrier rollers	9 x 2
Number of towing track rollers	2 x 2
Number of shoes	49 x 2
Travel Speed	3.2/4.7 km/h
Tractive Force	203 kN
Grade Rating	70% (35°)

### SWING SYSTEM

Swing Motor Type	Slant Disc Piston Motor
Swing Speed	0-10.2 rpm
Braking Type	Pressure release, mechanical braking

### FUEL TANK CAPACITY (L)

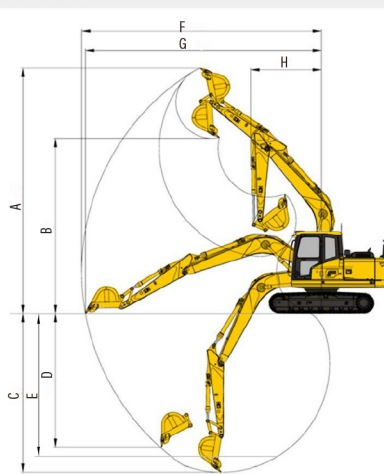
Fuel Tank Capacity	330
Cooling System	28
Engine Oil Volume	20
Hydraulic Oil Tank	190
System Capacity	400

### OPERATING WEIGHT AND SPECIFIC GROUND PRESSURE

Specific Ground Pressure	35.3 KPa
Operating Weight	22,800 kg

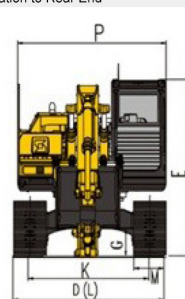
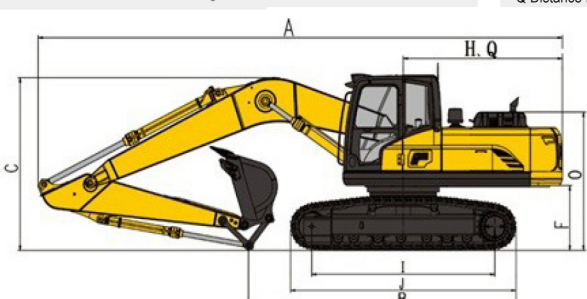
### OPERATING REACH (MM) (Moving Arm: 5,700 mm Bucket Arm: 2,925 mm)

A Maximum Digging Height	10075
B Maximum Dumping Height	7165
C Maximum Digging Depth	6515
D Maximum Vertical Digging Depth	5795
E Maximum Digging Depth at 2,500 mm on the Horizontal Plane	6230
F Maximum Digging Distance	9865
G Maximum Digging Distance on the Horizontal Plane from the ground	9685
H Minimum service device turning radius	2970



### OVERALL DIMENSIONS (MM)

A Total length	9615
B Grounding length (during transport)	5025
C Total height (to the top of the swing arm)	3035
D Total width	3180
E Total height (to the top of the driver's cab)	3045
F Counterweight ground clearance	1055
G Minimum ground clearance	466
H Tail swing radius	2925
I Distance between wheels	3655
J Track length	4460
K Track gauge	2380
L Track width	3180
M Shoe width	800
O Hood height	2375
P Turntable Width	2725
Q Distance from Center of Rotation to Rear End	2920



\* Les modifications de la spécification ne font pas l'objet d'un avis spécial. Les photos comprennent possiblement des pièces optionnelles. Il est possible que la couleur réelle du produit est différente que celle affichée.

# SINO MACHINERY GHANA LTD

Service Tel: +233 598606666

Address: 36, Spintex Road, Near Action Chapel, Accra